

At every step of life, strong, durable and aesthetic...



Contact: [info@aldur.com.tr](mailto:info@aldur.com.tr)

# WE PLAY HARD WITH STONES



BASALT  
RED BASALT  
GRANITE





Biggest basalt producer of Turkey with approved quality...



ISO 9001 • 14001 • OHSAS 18001



Our Aliaga basalt quarry



**We produce semi-finished and final products from basalt...**

Aldur produces a wide range of semi-finished and final products in own plants in Aliaga quarry.

**ALDUR**



Basalt cobbles,  
Wall stones,  
Columns,  
Aggregates,  
Dyed granules,  
Fine powders,  
Blastings sands





## Adding color to life by dying basalt granules

**ALDUR**



Dyed granules for shingle, membrane and metal roof tiles in various colors as well as construction materials industry.





We produce cut to size granite ,basalt and red basalt in our own plants

**ALDUR**



We cut basalt and granite in required dimensions. We can produce kerbs and rain gutters as well.





## Unique red basalt quarry in Turkey by all means of color & sustainability

Now producing  
blocks for cutting,  
also split materials.

**ALDUR**



Red basalt quarry in Manisa



**ALDUR**

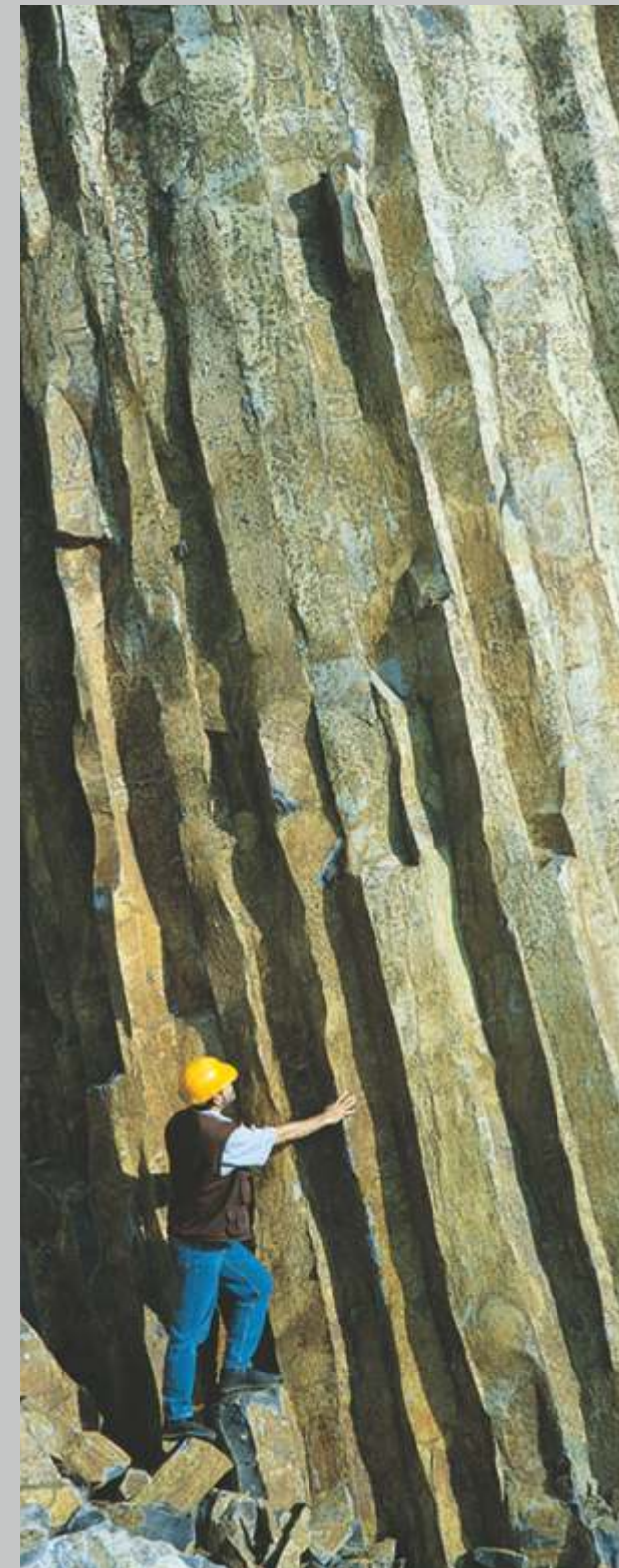
**Exporting to many countries and creating jobs for the people.**



Our stones are being used in main streets & parks of many cities of Europe

**ALDUR**

## An international brand in natural stones & basalt



Aldur is a group of companies, established in 1993 for basalt cubes production and became the biggest basalt producer of Turkey today. Our basalt quarry is located near container terminals as well as bulk loading ports near Aliaga region. This gives us a big chance to support our clients with minimized logistic costs.

We are also dealing with Grey Granite since long years. We have started as exporters, then managing a quarry and finally we have established our own plant for Granite cutting in mid-2019.

We also have started to excavate our Red Basalt quarry (under loyalty rights for 20 years) in December 2019. This material is also very strong and durable with perfect specifications, even for outdoor uses in hard weather conditions.

Our annual turnover is over 10 million (2018 figures) Euros with our teammates + 100. We have exported 480 containers, mostly to Germany, Italy and some other markets in 2019.

We already produce and export the following items:

- Black Basalt, pavers from our own quarries, produced according to EU standards.
- Cut to size Red Basalt with various surface finishing, sand-blasted, flamed, polished according to customer's requirements, & Natural split produced according to EU standards.
- Cut to size Granite from our own plant, with various surface finishing, sand-blasted, flamed polished according to customer's requirements and Natural split produced according to EU standards.
- Basalt aggregates for various purposes; namely railway ballast, road construction etc...
- Fine basalt powder for various industries.
- Dyed Basalt Granules for Shingle and Membrane production.





**RAILWAY BALLAST**  
Accredited by  
Turkish Railways



**FILLER SANDS**  
0-30 mm.



**RED BASALT  
AGGREGATES**  
For high resistance  
to wear & tear  
concrete & asphalt  
pavers



**BASALT AGGREGATES**  
Basalt aggregates in  
required sizes for asphalt  
applications



**SURFACE GRANULES FOR  
CONCRETE PAVERS (BLACK)**  
Black Basalt Granules for high resistance  
to wear & tear concrete pavers.



**SURFACE HARDENING  
GRANULES**  
0,5-2,5 mm.  
Used for surface  
hardening purposes



**SANDS FOR CONTRUCTION  
MATERIALS'S CHEMICALS**  
100-500 mikron.  
Used in production of  
ceramic tile adhesives



**SURFACE GRANULES FOR  
CONCRETE PAVERS (RED)**  
Red Basalt Granules for high  
resistance to wear & tear  
concrete pavers



**FINE BLASTING SANDS**  
Used for sand blasting of  
sensitive surface



**COARSE BLASTING SANDS**  
Used for cleaning of rusty surfaces





Grey



Red



Grey-Black



Red-Black



Green



Brown



Green-Black



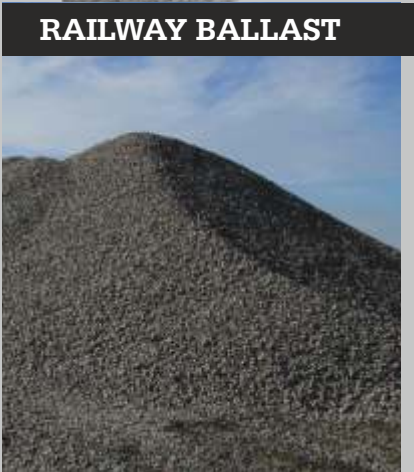
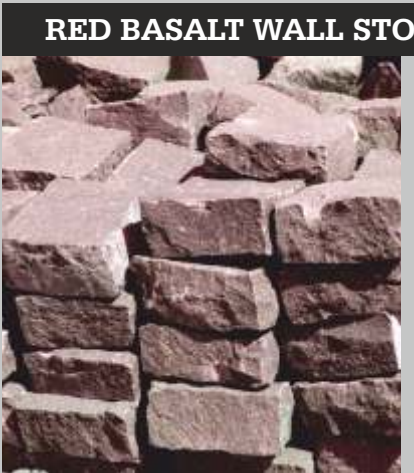
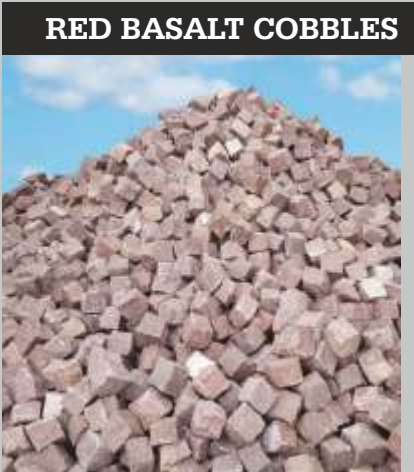
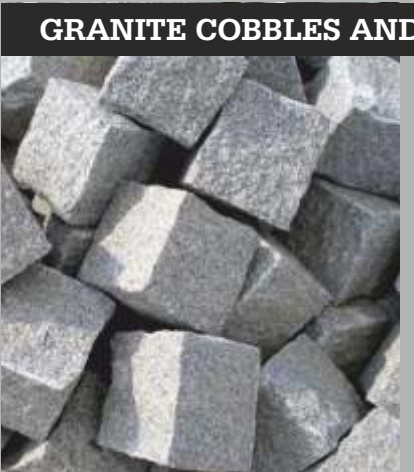
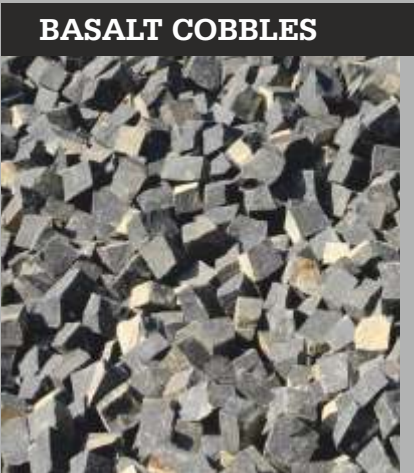
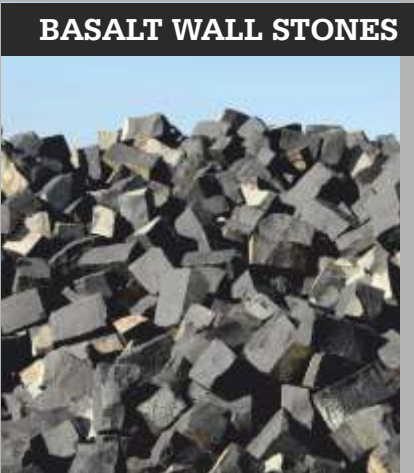
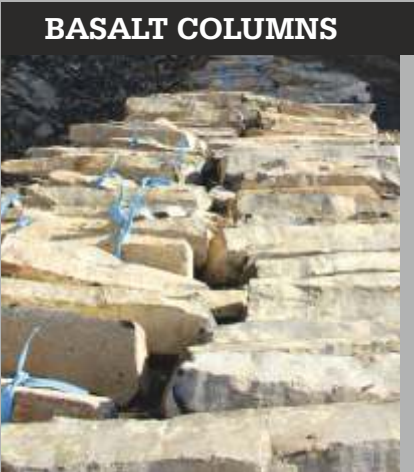
Black

DYED BASALT GRANULES

Dyed Basalt Granules for Shingle and Membrane as well as Metal Roof Tiles production are crushed and dyed in our own facilities according to the requirements of the market.









# What We Add to Life

**ALDUR**

**BASALT FOR ASPHALT**



**EPOXY SANDS**



**FINE POWDERS & GRANULES FOR CONSTRUCTION CHEMICALS**



**FILTERING SANDS**



**DYED BASALT GRANULES FOR ROOF COVERINGS**



**DYED FLAKE GRANULES FOR METAL TILE**



**BLASTING SANDS**



**INFRASTRUCTURE SANDS FOR PLAYGROUND**





## What We Add to Life

### GRANITE TILES, BORDERS, GUTTER



### RED BASALT TILES, BORDERS, GUTTER



### BLACK BASALT TILES, BORDERS, GUTTER



## Our Analysis Chart and Certificates

TYPICAL VALUES OF OUR STONES	VALUES	ALIAGA BASALT	PERGAMON GRANITE	RED BASALT
Total Porosity	%	1,60-1,90	3,68-4,16	5,48-7,18
Open Porosity	%	0,15-0,23	0,54-1,16	0,98-1,38
Determination of the Slip Resistance by Means of the Pendulum Tester (Wet conditions)	SRV	5,8	15,6	na
Average Water Absorption Coefficient by capillarity	g/m2.s0,5	0,12	1	na
Average Water Absorption at Atmospheric Pressure	%	0,08	0,4	0,6-0,9
Determination of Frost Resistance (12 Cycles)				
Average Flexural Strength	Mpa	19,4	13,9	24,8
Mass Change	%	-0,01	0,015-0,045	0,07-0,21
Average Mass Change	%	-0,01	0,033	0,06
Determination of Resistance to Ageing by Thermal Shock				
Test Results Before Thermal Shock				na
Test Results After Thermal Shock				na
Average Mass	%	0,04	0,4	na
Average Flexural Strength	Mpa	-15,43	3,18	na
Average Open Porosity	%	17,29	-7,62	na

